

BIOMASS ENERGY EQUIPMENT SOLUTIONS PROFESSIONAL PROVIDER



CONTACT US

86-0531-83318718
86-0531-83223999

86-0531-83769999
86-0531-83769999

info@rotexmaster.com
machine05@rotexmaster.com

www.rotexmachine.com
www.yuguanjixie.com

Caofan Town Zhangqiu City Shandong Province China

BIOMASS ENERGY

**ENTERPRISE
INTRODUCTION**

ROTEXMASTER

BIOMASS ENERGY EQUIPMENT ONE-STOP SERVICE PROVIDER





Values:

Offer The World A Blue Sky. Customers First , Employees Second ,Shareholders Third.

Management:

Related to the energy, chemical, feed, organic fertilizer industry. Main Products: biomass energy pellet machine , hammer mill ,cooler and conveyor etc. accessories equipment .Large scale crushing and chipping equipment for biomass power plants, all kinds of building templates and garbage. Large scale drying equipment for biomass and various chemicals. Feed include premix ,complete feed equipment .The above equipment's R & D, manufacturing, installation and training, as well as production and operation services.

Data Facts:

Registered Capital :Ten millions yuan.

Total Area :40,020 square meter.

Employees :More than 200 people.

Annual Capacity : More than 1600 various types main machines ,2000 sets auxiliary machines , It involves 420 production lines.

Customers Distribution: Nationwide ,87 countries (as of December 31, 2017) .

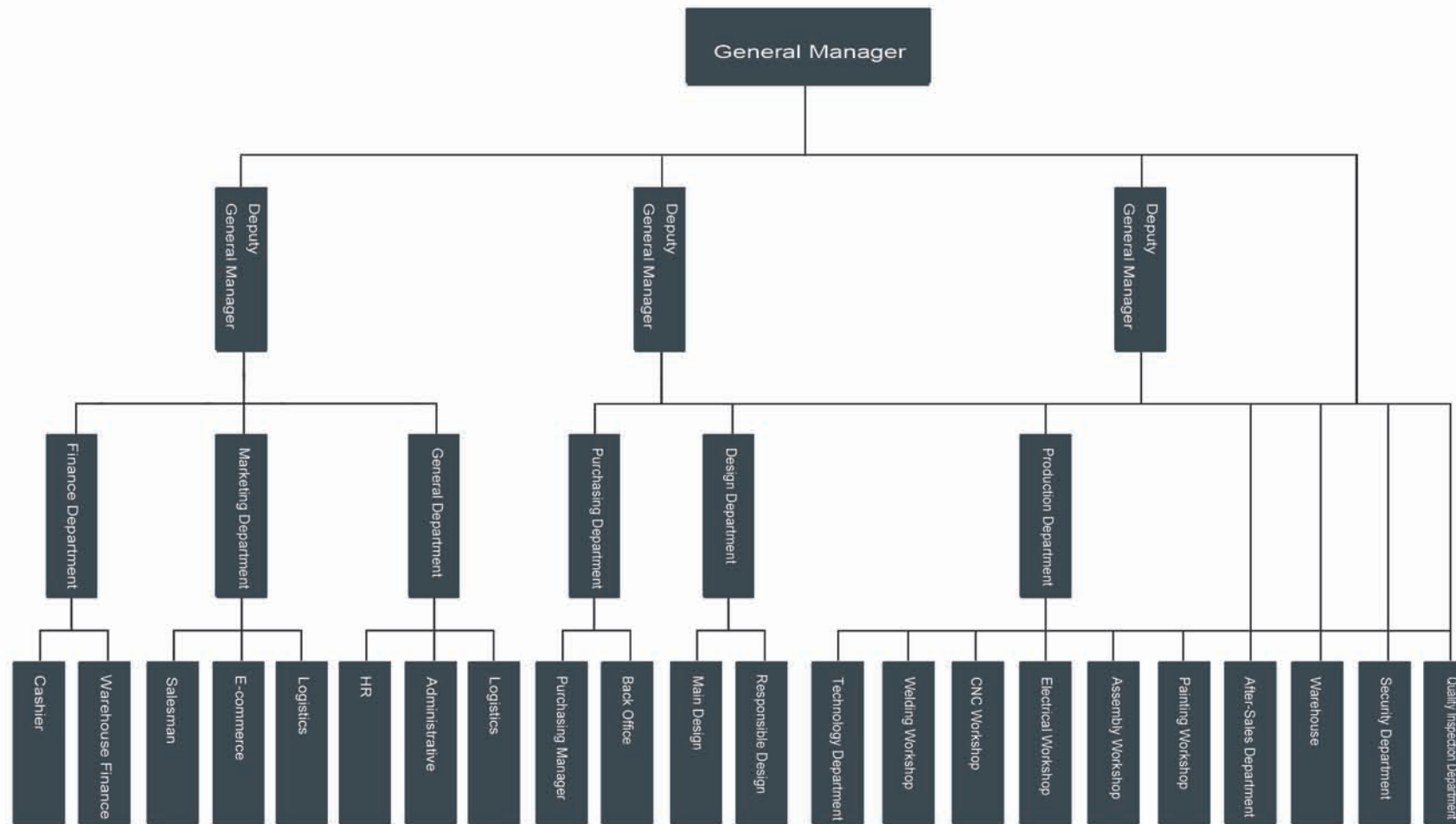
Technology & Innovation:

Technical chief engineer has engaged in machinery industry for more than 30 years. Technical core team Multiple invention patents and copyright.

Government Support:

High and New Technology Enterprises. Technology Research and Development Center. Rotex Master Party Branch.

Rotex Master Labour Union.

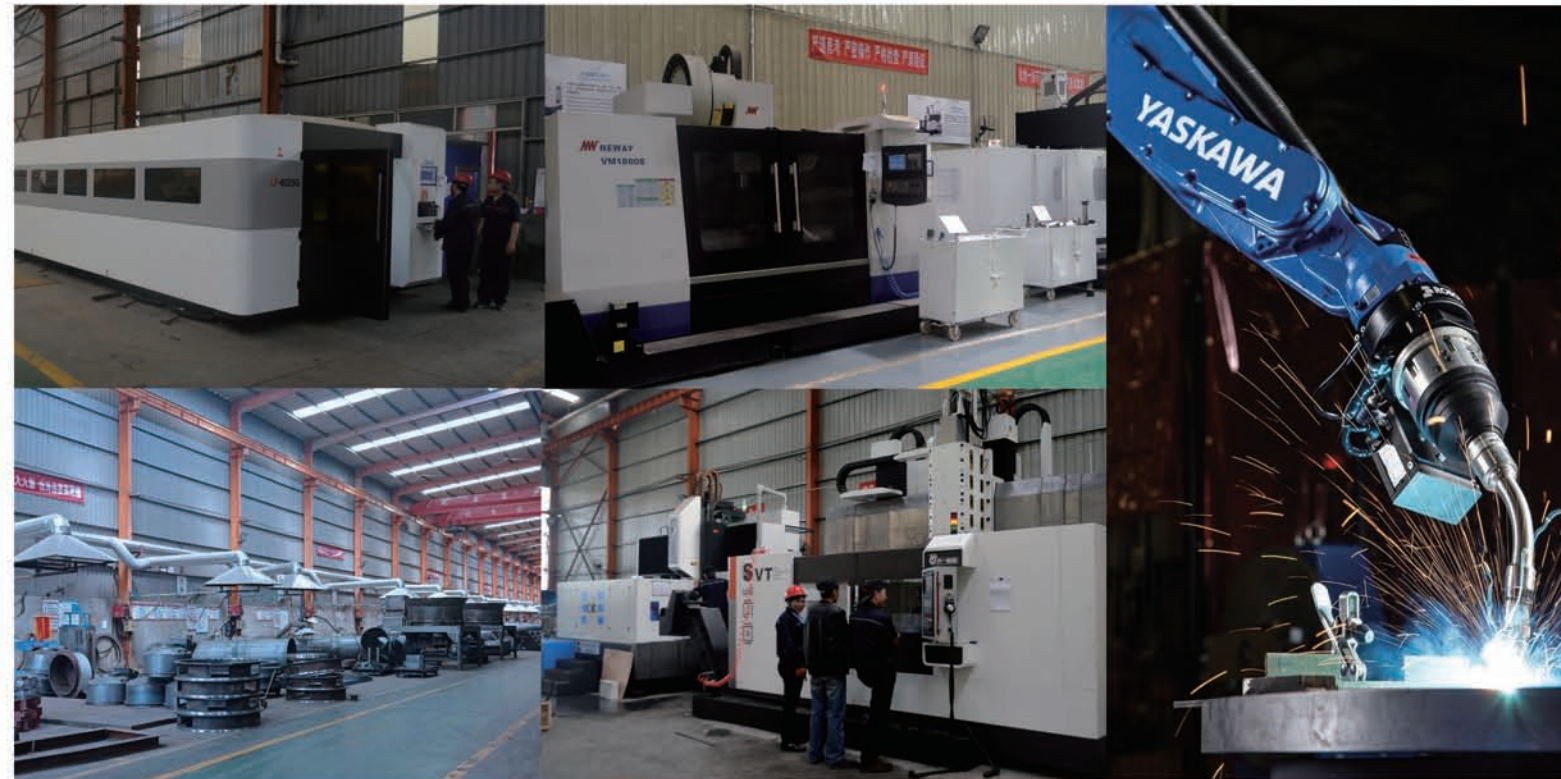




R&D: Core R&D team 30 persons, it is a team with many years' experience in equipment R&D, process R&D and production line section design. The chief engineer of the company engaged in equipment R&D more than 30 years. The company has a number of invention patents and works, and established the technology R&D and test base in HeiLongJiang Province and Malaysia..

PATENT: More than 20 national design patents.

PRODUCTS: The main products of company includes biomass energy equipment and feed equipment. The biomass energy equipment includes wood crushing equipment, mobile wood crushing equipment, grinding equipment, rotary crushing equipment, large drying equipment, wood pelletizing equipment, cooling equipment, conveyor equipment and related auxiliary equipment. The feed equipment includes premix and complete feed equipment.



PEOPLE: People-oriented, introduce and cultivate talents, implement comprehensive performance appraisal

Equipment: Laser cutting ahead of the industry, the full use of CNC machining center and welding robots

MATERIAL: Perfect material management, finished product, semi-finished product, ERP system clear at a glance.

RULE: Standard drawing process, regular operation process.

Environment: Control production environment strictly, implement 5S management and standard visual management.

TEST: Comprehensive testing tools, the responsible persons measure and record accurately.





SIEMENS MOTOR
 MITSUBISHI ELECTRIC
 HARBIN BEARING GROUP CORP.
 SVENSKA KULLAGER-FABRIKEN
 INVT ELECTRICITY
 DELIXI ELECTRIC CO.,LTD
 SCHNEIDER ELECTRIC SA
 CHINT
 AIRTAC
 GUOMAO REDUCER GROUP
 BONENG TRANSMISSION CO.,LTD



PROJECT DESIGN

- 1.Raw material customized solutions.
- 2.Project proposals b.Project infrastructure.
- 3.24 hour scheme design 48 hours 3D drawing plant design.
- 4.Combination of idling machine test and material machine test--Strict quality inspection.



INSTALLATION AND COMMISSIONING

- 1.Packaging and logistics services.
- 2.Engineer on-site installation equipment.
- 3.Installation completed, raw material testing machine test reached design output standard.
- 4.Production / Operation



AFTER SALES SERVICE

- 1.Wear and spare parts.Preventive services.Repair snd field services.
- 2.Refurbishment services.Pick-up-and-drop services.
- 3.24-7-365 online service.
- 4.Technical support.



PROJECT TRAINING

- 1.Basic knowledge of equipment operation, maintenance and maintenance (including daily management, inspection, inspection, lubrication, adjustment, fastening, etc.).
- 2.Equipment-specific training (learning and improving operational procedures, including equipment principles, structures, functions and equipment, job descriptions, etc.).
- 3.Common faults and equipment handling.
- 4.On-site teaching during installation and commissioning: On-site management personnel and operators are trained by professionals, with equipment operation manual as information, and on-site operation as auxiliary.
- 5.On-site teaching: In the actual operation process, explain the operation steps in detail, guide the operation, and answer the trainer's questions about equipment operation.



Following the basic management concept of people-oriented, Rotexmaster regards employees as the most valuable assets, establishes employees' main position in company management, respect employees and care for employees. Rotexmaster just select and appoint people who share same values of company. By providing company culture training and distributing seasonal benefits, Rotexmaster make employees to love the company more, gain a sense of belonging to the company. Creating a harmonious working environment, improving competitiveness of the company and increasing value of the company.

Employment Security:

Work accidents can be prevented. Through standard operation guidance and regular safety training, employees steadily reduce the incidence of accidents every year.

Employee Care:

Monthly necessities will be distributed in the form of welfare, and intimate gifts will be sent out on holidays. Each year, each employee will be provided with a long-term paid vacation.

Women Care:

Treating women with a fair and impartial attitude. Prejudice against women will limit the speed of production.

Community Organization:

Rotexmaster has established an integrated training process, including orientation of new employees, departmental work training, company culture training, management development training and etc.

CUSTOMER CASE



JIANGSU ANNUAL OUTPUT OF 100,000 TONS WOOD PELLET PRODUCTION LINE



JIANGSU ANNUAL OUTPUT OF 100,000 TONS WOOD PELLET PRODUCTION LINE



JIANGSU 20T/H WOOD PELLET PRODUCTION LINE



PHILIPPINES 8T/H EFB PELLET PRODUCTION LINE



MALAYSIA 6T/H WOOD PELLET PRODUCTION LINE



ANHUI 8-10T/H STRAW PELLET PRODUCTION LINE



THAILAND 6T/H WOOD PELLET PRODUCTION LINE



VIETNAM 6T/H WOOD PELLET PRODUCTION LINE



SHANXI 6T/H WOOD PELLET PRODUCTION LINE



JIANGSU 10T/H WOOD PELLET PRODUCTION LINE



VIETNAM 10T/H WOOD PELLET PRODUCTION LINE



YUXI 10T/H WOOD PELLET PRODUCTION LINE



THAILAND 10T/H WOOD PELLET PRODUCTION LINE



TAIWAN 10T/H SAWDUST & COAL SLIME PELLET PRODUCTION LINE



JAPAN 12T/H WOOD CHIPPER



RUSSIA 10T/H WOOD CHIPPER



SERVING MORE THAN 12,000 CUSTOMERS WORLDWIDE

OFFER THE WORLD A BLUE SKY